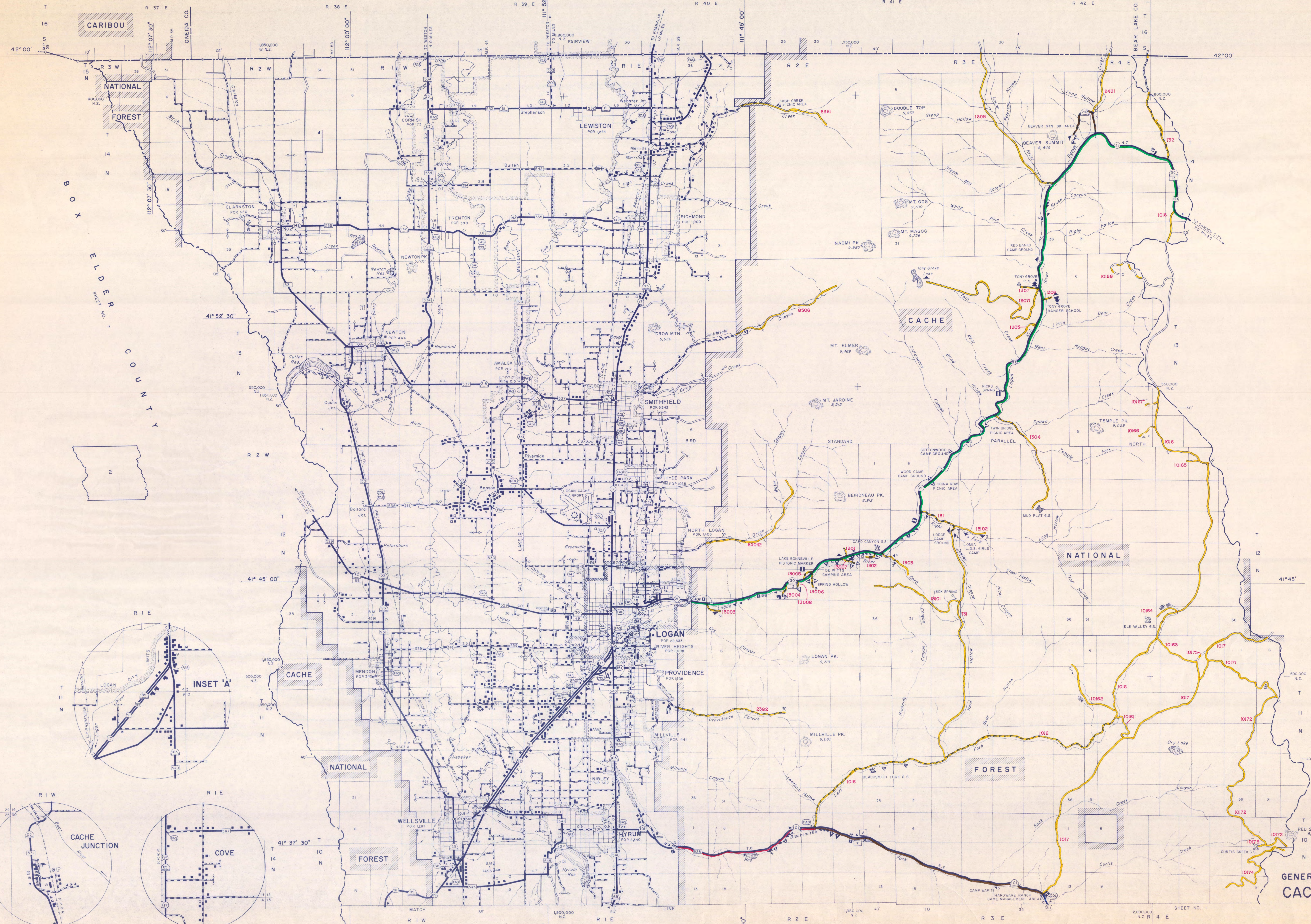


I D A H O
F R A N K L I N C O U N T Y



CARIBOU

NATIONAL FOREST

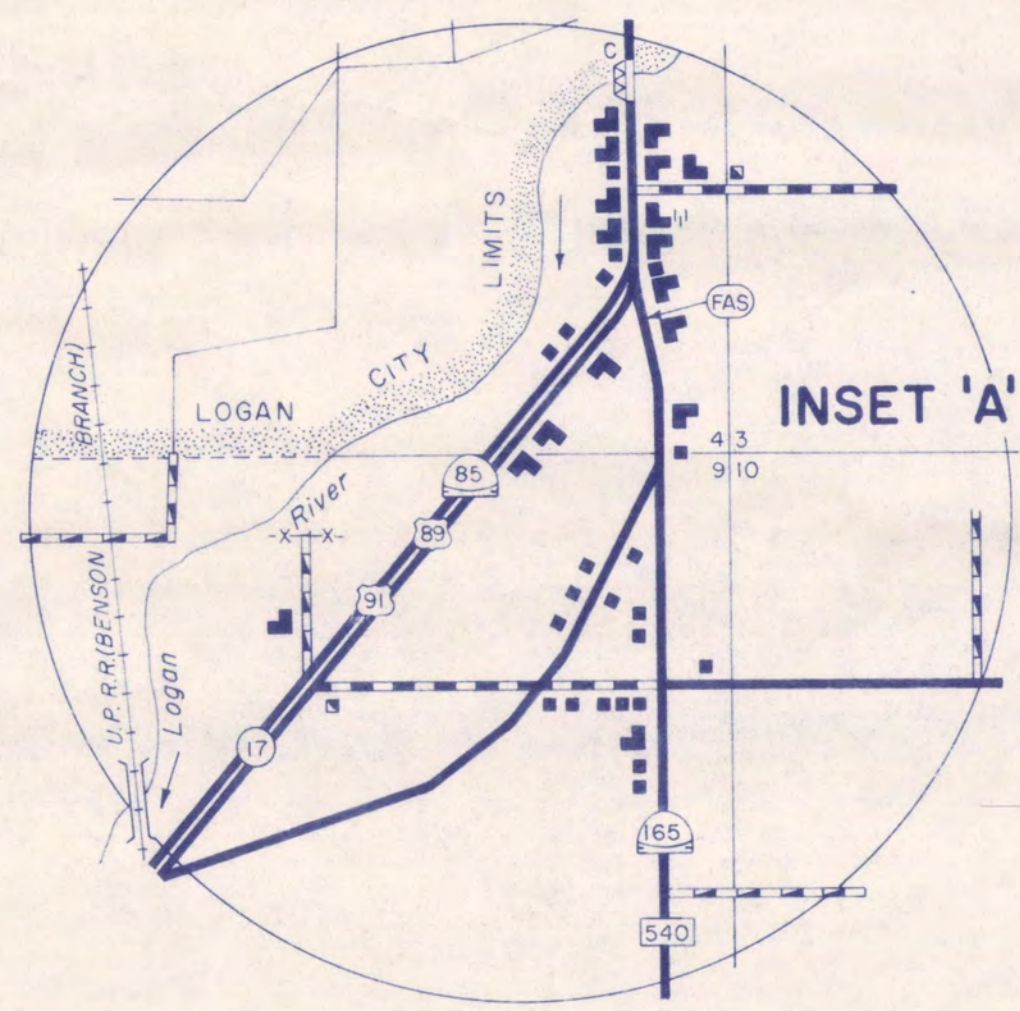
CACHE

NATIONAL

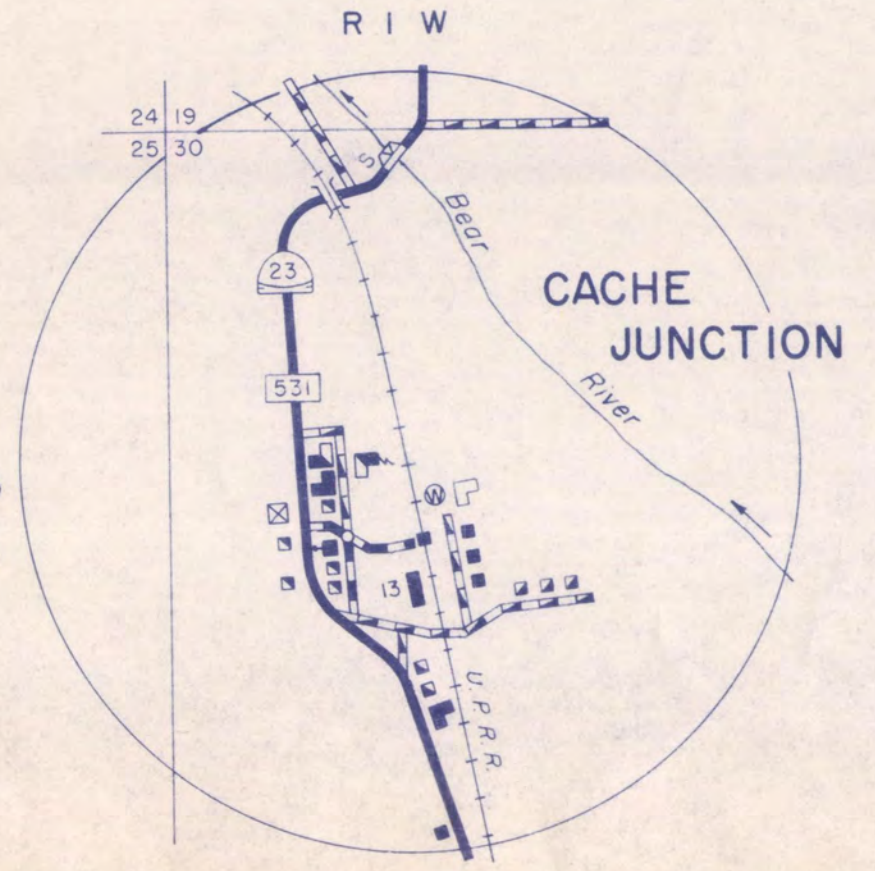
FOREST

ELDER COUNTY

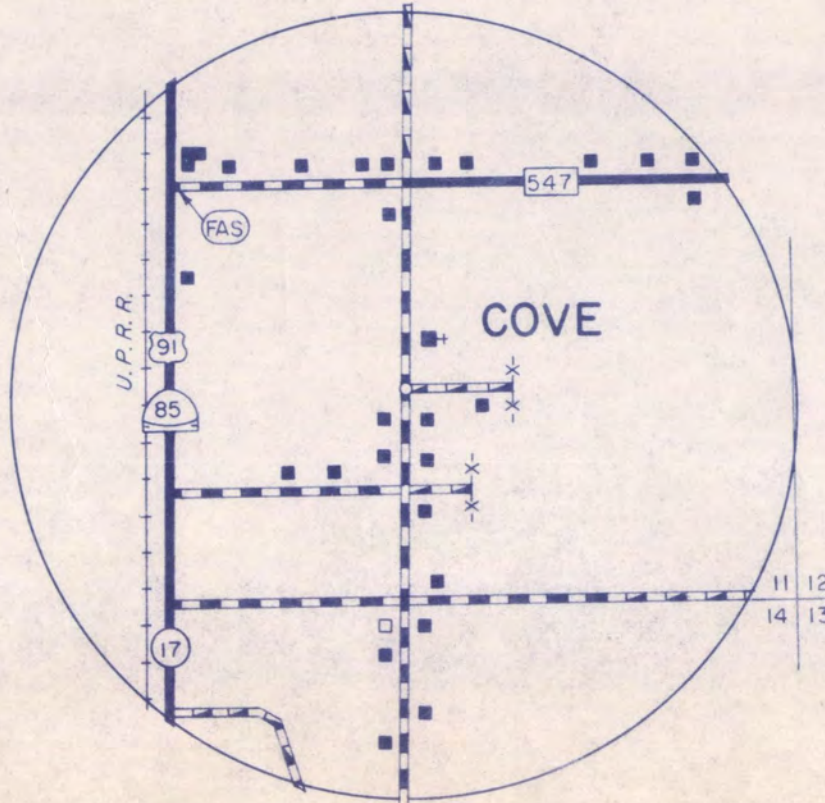
RICHTON COUNTY



INSET 'A'



CACHE JUNCTION



COVE

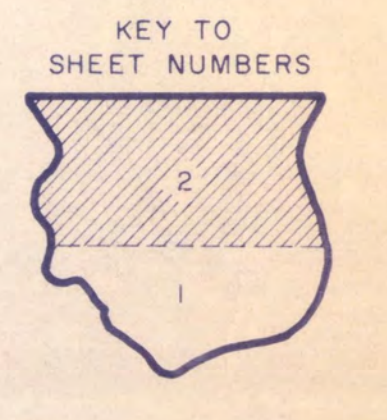
SCALE FOR ENLARGEMENTS

GENERAL HIGHWAY MAP
CACHE COUNTY
UTAH
SCALE

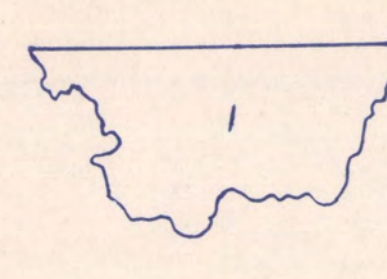
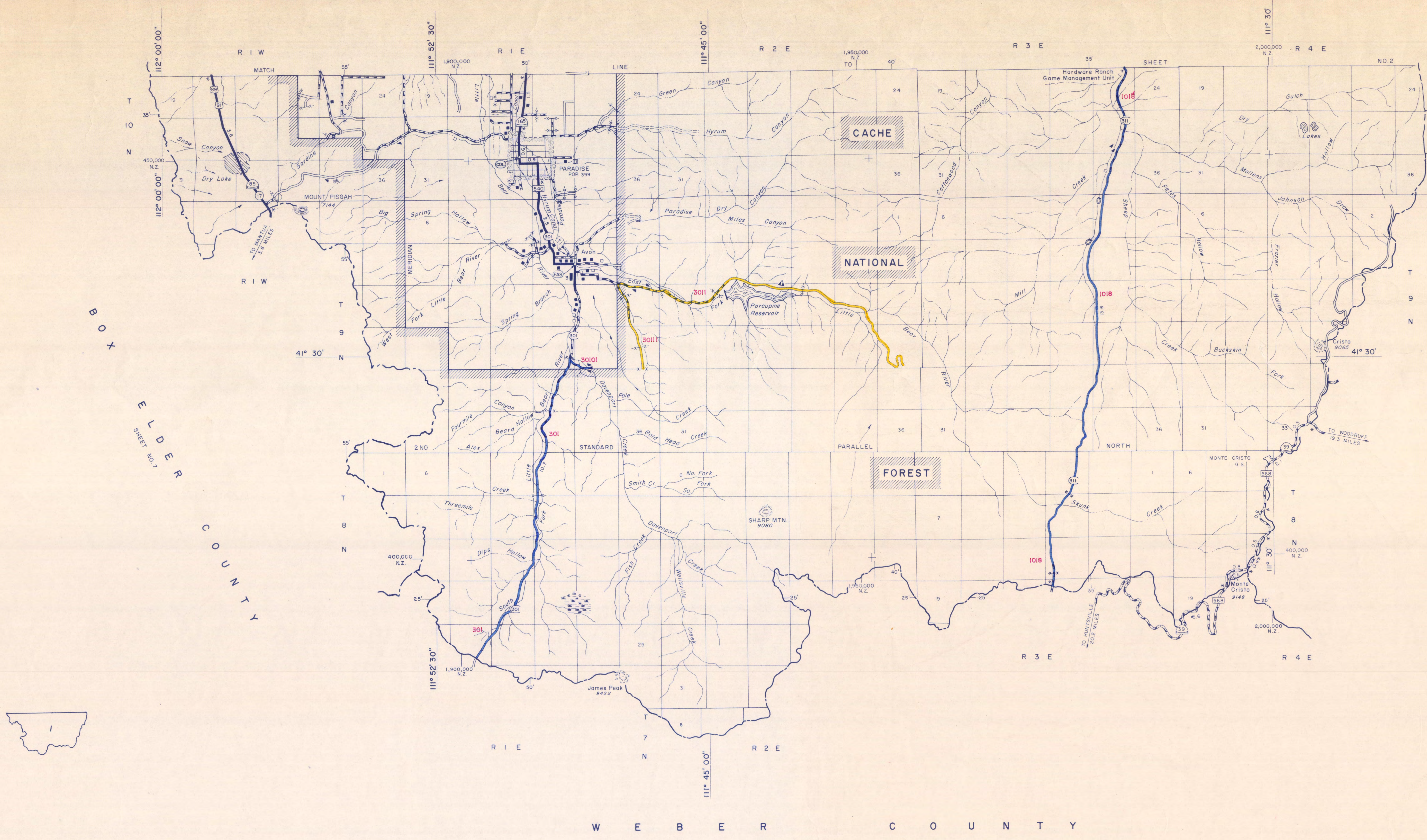
1971

POLYCONIC PROJECTION

GENERAL HIGHWAY MAP APPROVED: MARCH 31, 1972



KEY TO SHEET NUMBERS

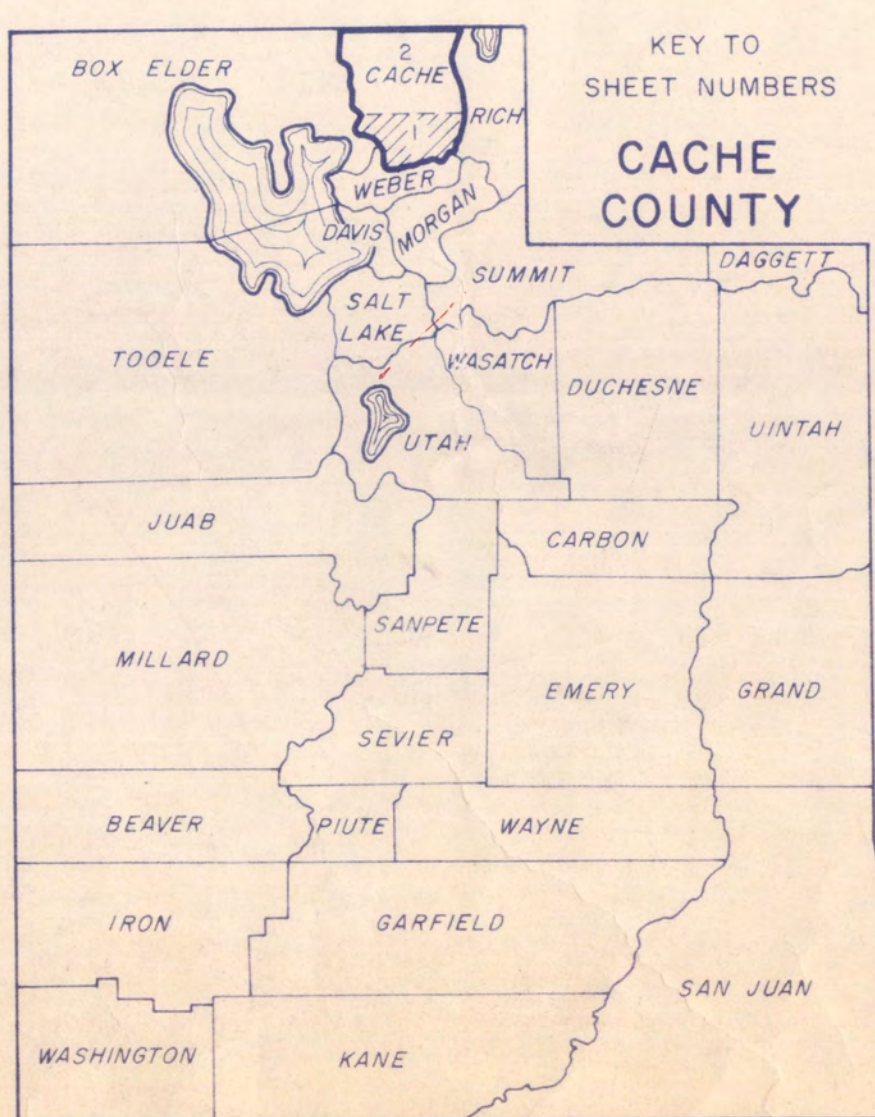


- GENERAL LEGEND**
- | | | |
|--|--|--|
| <ul style="list-style-type: none"> DIVIDED HIGHWAY HIGH TYPE PAVED ROAD BITUMINOUS SURFACED ROAD LOW TYPE GRAVEL SURFACED ROAD GRADED AND UNIMPROVED ROAD BLADED ROAD PRIVATE ROAD INTERSTATE SYSTEM U.S. HIGHWAY SYSTEM STATE HIGHWAY SYSTEM FEDERAL AID PRIMARY HIGHWAY SYSTEM FEDERAL AID SECONDARY HIGHWAY SYSTEM END OF FEDERAL AID DESIGNATED ROUTE POINTS BETWEEN WHICH DISTANCES ARE MEASURED HIGHWAY GRADE SEPARATION CUL-DE-SAC DEAD END ROAD INTERCHANGE ARCH BRIDGE TRUSS BRIDGE IS-STEEL W WOOD HIGHWAY BRIDGE GENERAL HIGHWAY TUNNEL FORD DAM WITH ROAD ROAD IN GORGE COLLECTOR SYSTEM END COLLECTOR ROUTE | <ul style="list-style-type: none"> RAILROAD ON STREET OR ROAD CULTURAL FEATURES SHOWN OUT OF POSITION RAILROAD RAILROAD STATION RAILROAD ABOVE RAILROAD BELOW RAILROAD BRIDGE RAILROAD TUNNEL STATE LINE COUNTY LINE URBAN BOUNDARY (F.A.) CORPORATE LIMITS NATIONAL FOREST BOUNDARY NATIONAL MONUMENTS MILITARY RESERVATIONS INDIAN RESERVATIONS WIDE STREAM NARROW STREAM INTERMITTENT STREAM IRRIGATION CANAL LEVEE OR DIKE LEVEE OR DIKE WITH ROAD GROUP OF MIXED CULTURAL FEATURES CLOSELY SINGLED AIRFIELD AIRPORT, COMPLETE FACILITIES AIRFIELD, LIMITED FACILITIES LANDING AREA OR STRIP FEATURES CLOSELY SINGLED AIRPORT WITH BOUNDARY PROPOSED ROUTE UNDER CONSTRUCTION (COMPLETION DATE) UNDER CONST. JUNE 1975 | <ul style="list-style-type: none"> STATE CAPITAL COUNTY SEAT CITY OR VILLAGE CENTER FARM UNIT DWELLING UNIT ROBE OR GROUP OF DWELLINGS VACANT BUSINESS ESTABLISHMENT SMALL ESTABLISHMENT POST OFFICE POWER PLANT RELAY STATION (COMMUNICATIONS) RADIO STATION STATE ROAD SHED CEMETERY SEASONAL DWELLING SEASONAL DWELLING CLOSELY SINGLED MINE SHAFT OR DRIFT WATER TANK TOWNHALL SCHOOL HOUSE CHURCH WEIGHT STATION FACTORY OR INDUSTRIAL PLANT SEASONAL INDUSTRY SEWAGE DISPOSAL PLANT PUMPING STATION (WATER) GRAIN ELEVATOR OIL OR GAS WELL OIL OR GAS FIELD OIL TANK PUMPING STATION OIL OR GAS GROUP OF STORAGE TANKS PICNIC GROUND PLAY GROUND, BALL FIELD, ETC. BATHING BEACH OR SWIMMING POOL CAMP SITE, NO PERFORMANCE SCENIC SITE CAMP OR LODGE, PERMANENT SPRING FOREST RANGER STATION GUARD STATION (SEASONAL) FISH HATCHERY GOLF GROUND OR COUNTRY CLUB AMUSEMENT PARK OR MALL FAIRGROUND, RACE COURSE, SPEEDWAY DRIVE-IN THEATRE PRE-HISTORIC RUIN GATE ACROSS ROAD ROADSIDE WATER WINDMILL LAKE, RESERVOIR OR POND LAKE, RESERVOIR OR POND WITH DAM DRY LAKE SUBJECT TO FLOOD MOUNTAIN RANGE, MESA OR BUTTE PROMINENT ELEVATION TRIANGULATION STATION BENCH MARK 5280 OIL TANK MARSH OR SWAMP LAND AIRWAY LIGHT BEACON, GENERAL GARBAGE OR RUBBISH SCRAP METAL SCRAP BUILDING MATERIAL SANITARY FILL OTHER REST AREA AUTOMOBILE GRAVEYARD |
|--|--|--|

- FEDERAL AID PRIMARY
- FEDERAL AID SECONDARY STATE
- FEDERAL AID SECONDARY LOCAL
- STATE ROAD
- COUNTY ROAD
- FOREST ROAD
- FOREST ROAD NOT ON ANY OTHER SYSTEM

6	5	4	3	2	1
7	8	9	10	11	12
13	14	15	16	17	18
19	20	21	22	23	24
25	26	27	28	29	30
31	32	33	34	35	36

KEY TO THE NUMBERING OF SECTIONS



GENERAL HIGHWAY MAP CACHE COUNTY UTAH

PREPARED BY THE
UTAH STATE DEPARTMENT OF HIGHWAYS
SYSTEMS PLANNING DIVISION
PLANNING STATISTICS SECTION

IN COOPERATION WITH THE
U.S. DEPARTMENT OF TRANSPORTATION
FEDERAL HIGHWAY ADMINISTRATION

SCALE
1971
POLYCONIC PROJECTION
50,000 Foot grid based on Utah
Coordinate System, Northern Zone,
as established by the U.S.C. & G.S.